

2023-24 MDUSBC Series Event 2 on 12-10-2023 (modified)



Oil Pattern Distance: **42 Feet**
 Forward Oil Total: **15.28 mL**
 Forward Boards Crossed: **382 Boards**

Reverse Brush Drop: **38 Feet**
 Reverse Oil Total: **11.32 mL**
 Reverse Boards Crossed: **283 Boards**

Oil Per Board: **40 uL**
 Volume Oil Total: **26.6 mL**
 Total Boards Crossed: **665 Boards**

	Start	Stop	Loads	Speed	Crossed	Start	End	Feet	T.Oil
1	2L	2R	4	14	148	0.0	5.9	5.9	5920
2	8L	8R	6	18	150	5.9	21.2	15.3	6000
3	10L	10R	4	22	84	21.2	33.6	12.4	3360
4	2L	2R	0	26	0	33.6	42.0	8.4	0

Conditioner:
Type In or Select One

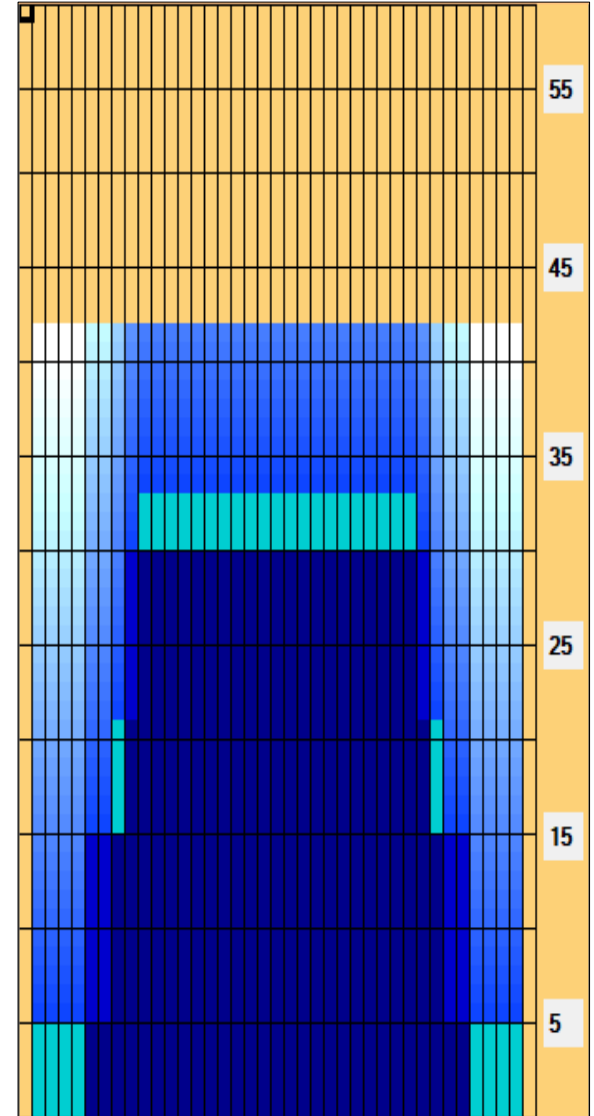
TransferType:
Type In or Select One

Forward
Reverse
More

	Start	Stop	Loads	Speed	Crossed	Start	End	Feet	T.Oil
1	2L	2R	0	22	0	42.0	30.0	-12.0	0
2	9L	9R	6	18	138	30.0	14.7	-15.3	5520
3	6L	6R	5	14	145	14.7	4.8	-9.9	5800
4	2L	2R	0	14	0	4.8	0.0	-4.8	0

Forward
Reverse
More

Forward
Reverse
Combined
Buff



Item	3L-7L:18L-18R	8L-12L:18L-18R	13L-17L:18L-18R	18L-18R:17R-13R	18L-18R:12R-8R	18L-18R:7R-3R
Description	Outside Track:Middle	Middle Track:Middle	Inside Track:Middle	Middle: Inside Track	Middle:Middle Track	Middle:Outside Track
Track Zone Ratio	4.17	1.13	1	1	1.13	4.17

